

ROTATOR INSTALLATION INSTRUCTIONS

The ROTATOR is the unit of the new millennium with computer space age engineering, lightweight and the highest quality internal parts available. The instructions that follow will help you install your ROTATOR

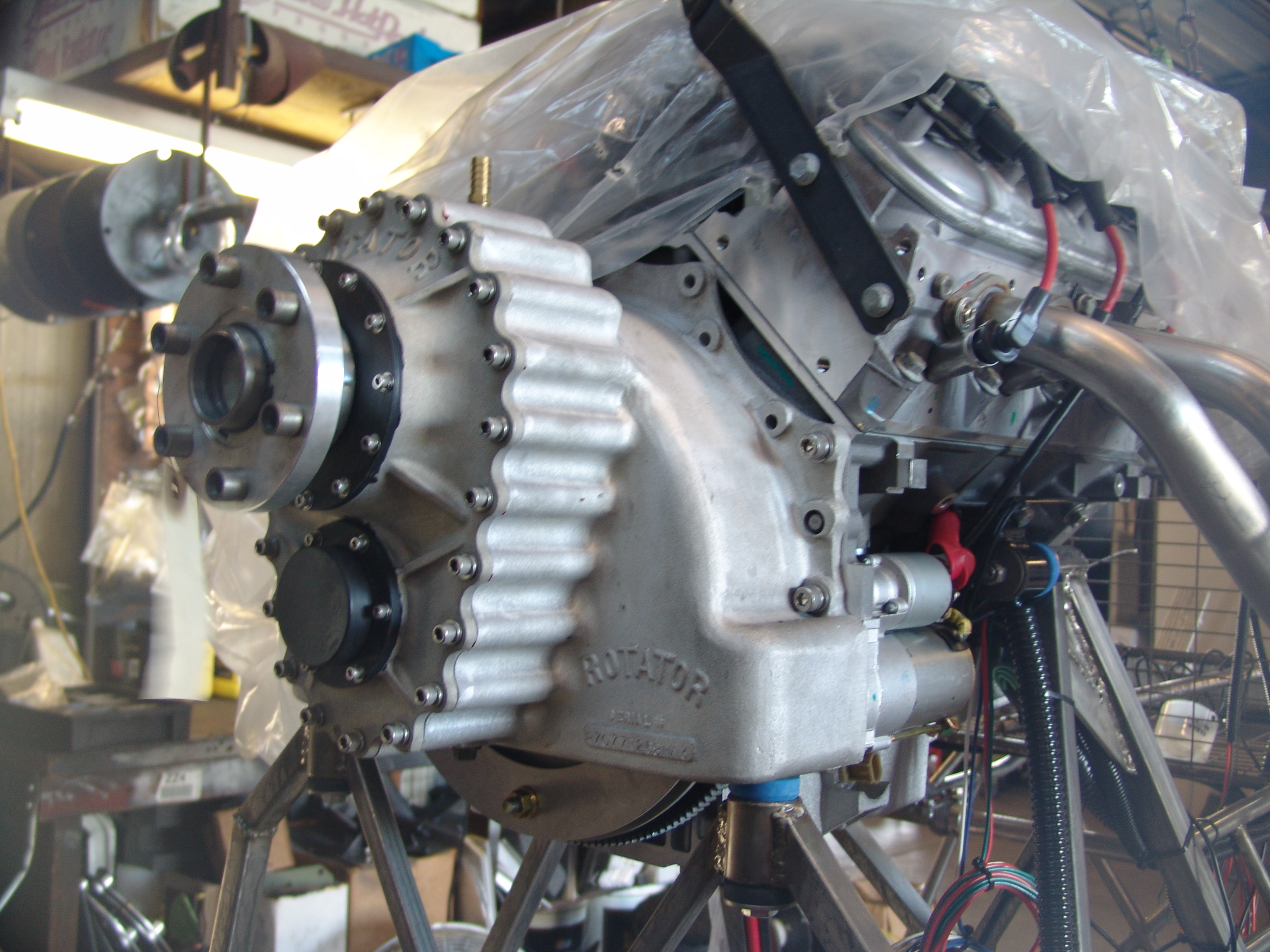
Parts Kit:

7 Allen bolts 3/8 x 1 1/4
7 Stainless steel lock washers
6 Grade 8 7/16 x 20 x 1 3/4 bolts
6 7/16 flat washers
6 7/16 flange nuts locking
12 washers (shims)

Installation:

1. Place the ROTATOR on dowel pins at rear of motor. Start 1 allen head bolt with lock washer in each side of ROTATOR. This will hold the ROTATOR in place while you line up the six holes in the flywheel and flex plate.
2. You are now ready to install all the allen head bolts and lock washers in the bell housing. place a drop of Loctite (red) on each bolt and then tighten by going side to side so it draws down equally.
3. Take your two mounting bolts and put one washer and one rubber mount on each. Install bolts through mounts, install another rubber mount on each with a flat washer and slide through ROTATOR mounting holes, now put a flat washer and locking nut on each. Be careful not to over tighten and compress rubbers.
4. Take the six grade eight bolts, washers and flange nuts. These are for coupling the flywheel to the flex plate on the ROTATOR. Making sure all six holes are aligned, install bolt with washer from engine to ROTATOR and a flange nut. Repeat this with all six bolts. If there is a problem with the gap between the flexplate and flywheel being to loose ad a washer as a shim, they should just be snug. **There should be no pressure on the engine flexplate as this will cause pressure on the crank, possible engine damage may occur.** You can now torque all six bolts to 50 foot-pounds.

5. We will supply 2 QUARTS of ROTATOR green oil. Remove the top plug and pour 24 fl oz US or .71 L, of the ROTATOR green oil into the ROTATOR. The ROTATOR green oil is the only oil to be used in the ROTATOR, if any other oil is used it will void the warranty.
6. Run for one hour. While the ROTATOR is still hot drain oil and refill with new oil. Change oil every 30 hours but not over 50 or if the boat is not run every 6 months.



WATO 33

ROTATOR

SERIAL #
2151728412

ZAF

1-8030
ZAF

575
1030

ROTATOR

PATENT # 38607146
OTHERS PENDING

SFWM
#5
2:68

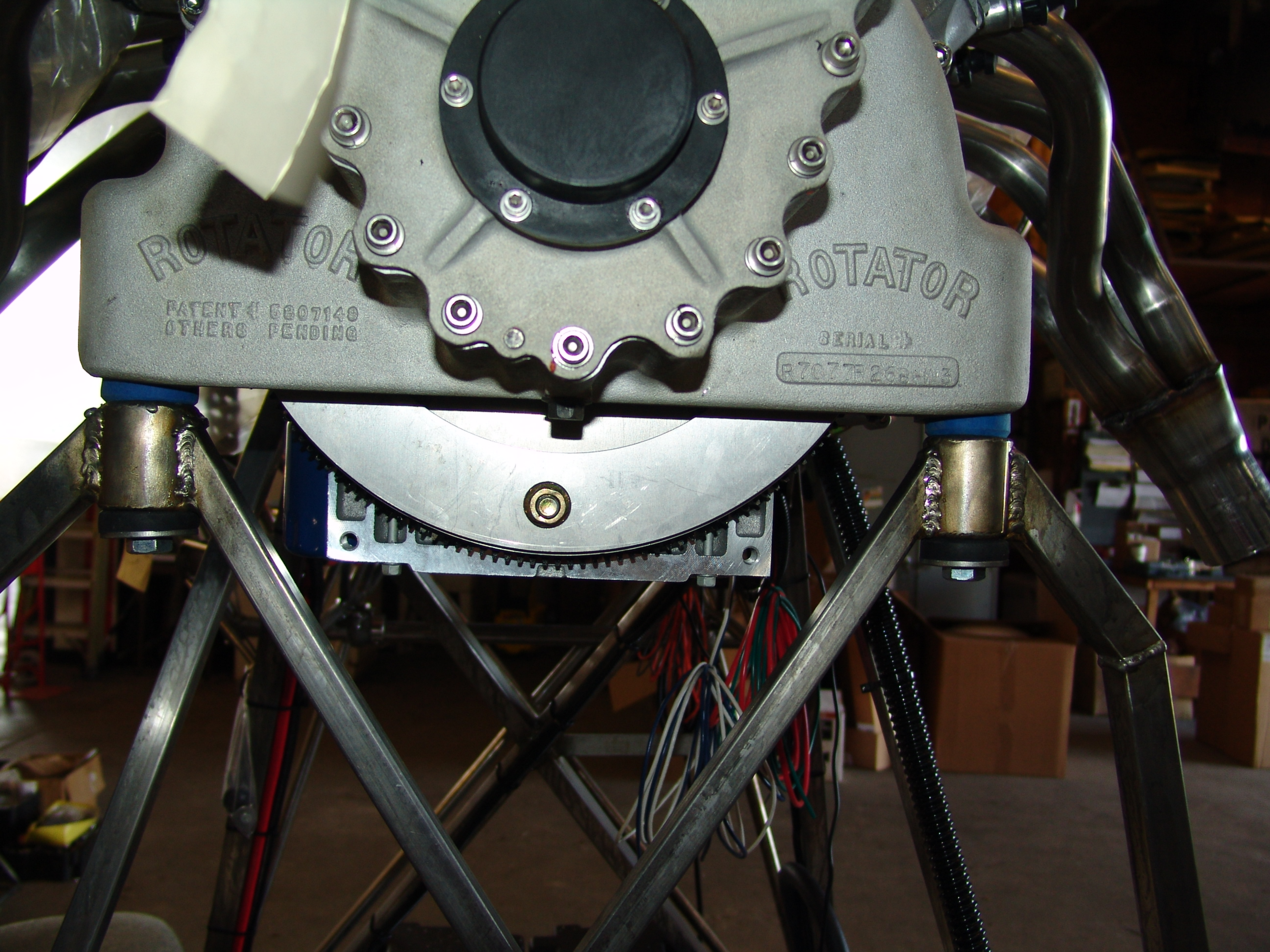
ROTATOR

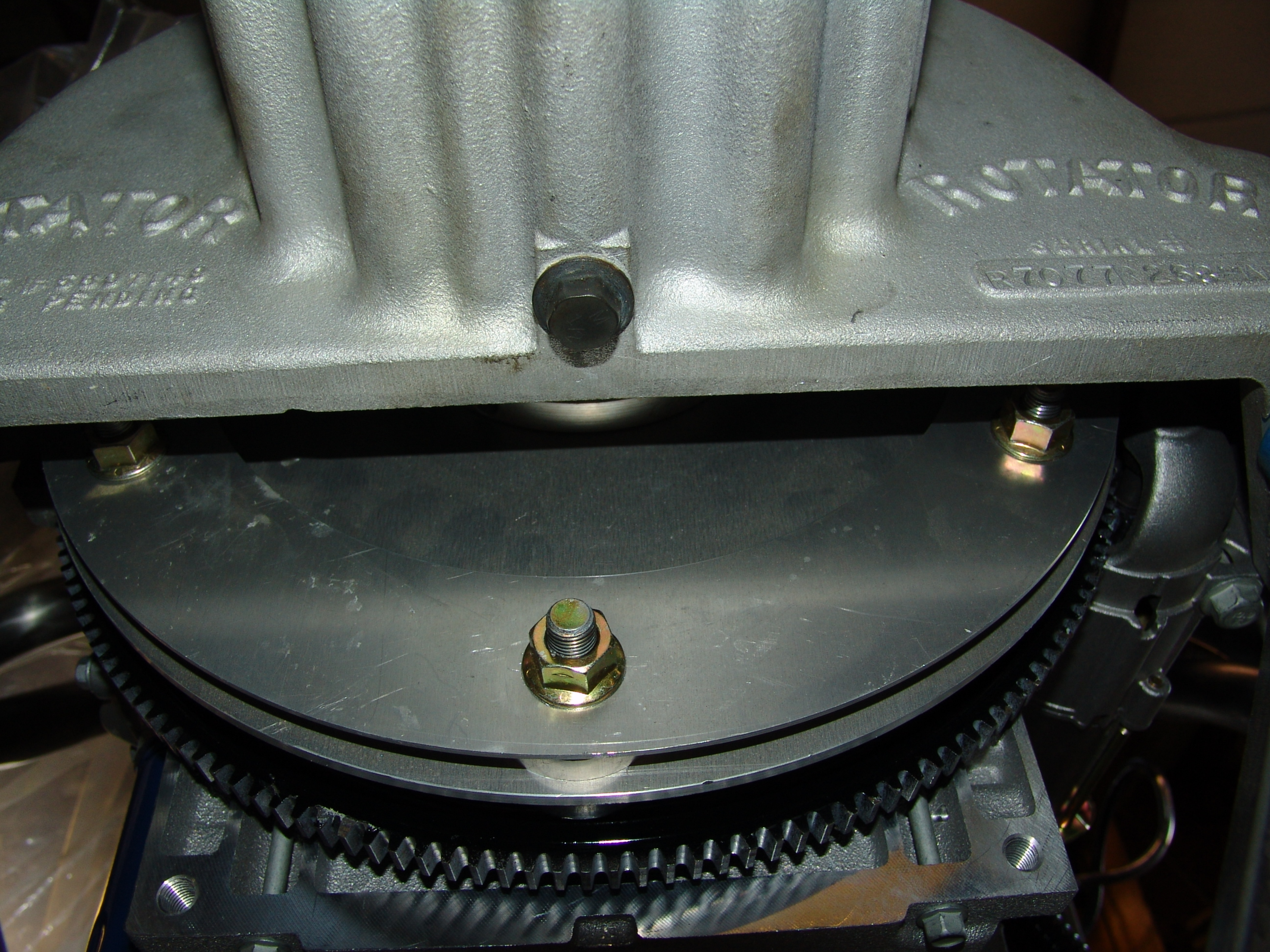
PATENT # 6807149
OTHERS PENDING

ROTATOR

SERIAL #

R7077E266H13





CASTOR
PENDING

CASTOR
RT011258



